

VEHICLES



## H875 pressure regulator

- > Two-stage design
- > Dual filtration

Compact with two-stage design for very accurate pressure control. Also features dual filtration for the protection of sensitive internal components.

ISOLATION



## AVC/AVO690 actuated valve

Normally closed and open actuated valves. Up to 690 bar pressure with Cv 0.8 or 2.0.

ISOLATION



## AVC/AVO1034 actuated valve

Normally closed and open actuated valves. Up to 1,034 bar pressure with Cv 0.8.

ELECTROLYSERS

## BP301 back pressure

Accurate pressure control of the hydrogen gases produced during the electrolysis process.



GAS CYLINDERS & DRONES

## CV414-SC cylinder valve

TPED approved self-closing cylinder valve for high pressure gas systems. Quick disconnect feature.



MOBILITY



## LW-TS414 two-stage regulator

A lightweight two-stage regulator with a low 0.04% decaying pressure effect for very stable control, even under depleting gas supply conditions.

REFUELLING

## RF1034 pressure regulator

- > Refuelling times as SAE J2601
- > Designed to ISO 19880-3

Balanced design and piston-sensed, it offers accurate control for refuelling applications up to 1,034 bar.



VEHICLES

## AUTO438 pressure regulator

- > EC79 approved
- > Easy servicing

EC79 approved piston-sensed pressure regulator with a balanced main valve as standard. Offers stable control of outlet pressures up to 20 bar.



DRONES

## LW351 pressure regulator



With an aluminium body it weighs 200g and measures just over 100mm, making it perfect for when every gram matters.

VEHICLES

## M875 pressure regulator



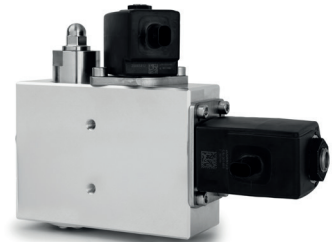
A modular design for customisable configurations tailored to unique system needs.

VEHICLES

## A875 pressure regulator

- > Electronic valves
- > Integrated PRV

Mechanical pressure reduction paired with a state-of-the-art proportional control valve for precise gas flow.



MATERIAL HANDLING

## LW438 pressure regulator



The lightweight attributes of the LW351 were combined with the higher pressures of the AUTO438 to create the two-stage LW438 regulator.

# What Is Your H2 Application?



### PRESSURE TECH LTD

Unit 24, Graphite Way, Hadfield, Glossop, Derbyshire, UK, SK13 1QH

T +44 (0)1457 899 307

E [sales@pressure-tech.com](mailto:sales@pressure-tech.com)

W [www.pressure-tech.com](http://www.pressure-tech.com)

© 2025 Pressure Tech Ltd. All Rights Reserved.